

Sphere and Now: Managing Science On a Sphere at the NCWCP



Ari Myers
arialmis.myers@noaa.gov

Jan Thomas
jan.thomas@noaa.gov

The NOAA Center for Weather and Climate Prediction



The facility houses more than 950 dedicated NOAA employees.

Location Restrains

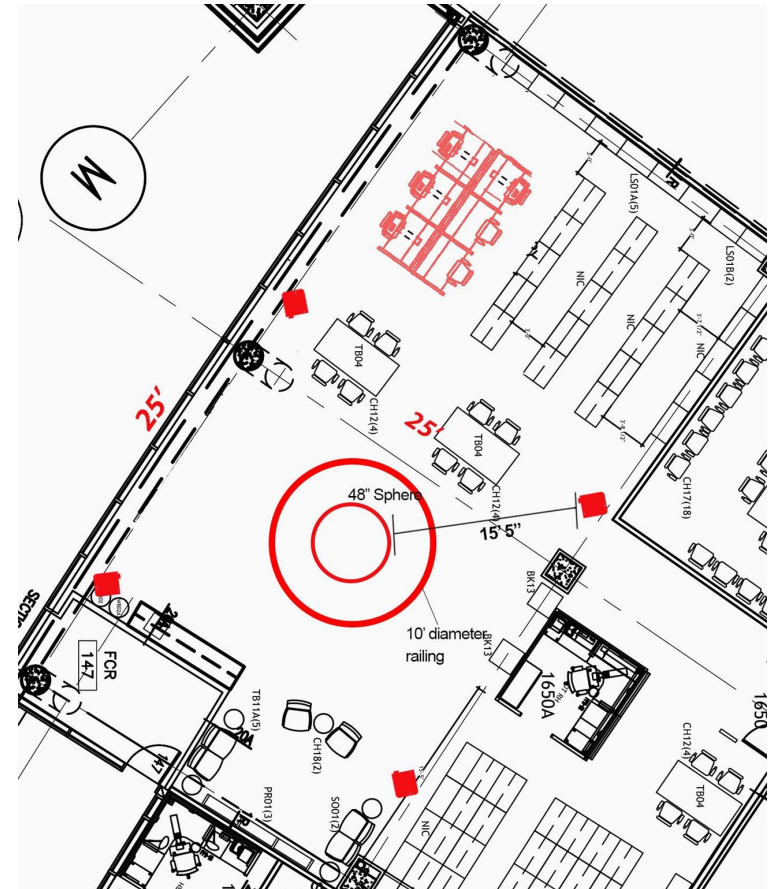


- Federal facility not opened to the public
- GSA leased building
- Isolated location

Space considerations for SOS



Library space investigations for SOS



SOS exhibit comes to the Betty Petersen Memorial Library



The BPM library proved to be a suitable location for the SOS exhibit.

The NCWCP SOS committee is formed by Genene Fisher



- [SOS User guidelines](#)
- [SOS team](#)
- [SOS reservation form](#)
- [SOS website](#)
- [SOS calendar](#)
- Open Hours

The Science On a Sphere installation is completed on September 14th, 2017, just in time for the NCWCP Open House.

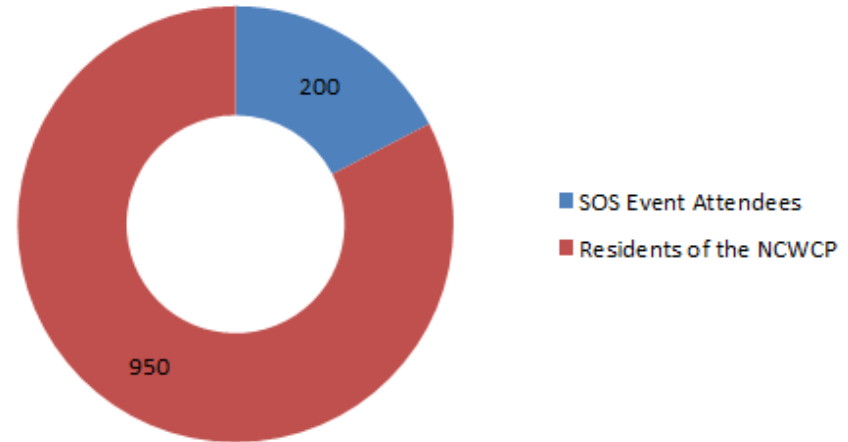


Success and Challenges



Successes

- 200 of the 950 residents of our building have attended an event or training since the Sphere's installation
- Tours presentations given to Frostburg State University, Penn State University, American Association of Physics Teachers, Indonesian Delegation, NOAA Kid's Day (Bring your child to work), NASA Goddard, World Bank Global Weather Enterprise and many many more



Successes

- Wilbur Ross, Secretary of Commerce, and Tim Gallaudet, Acting Under Secretary of Commerce for Oceans and Atmosphere, visits NCWCP Science on a Sphere

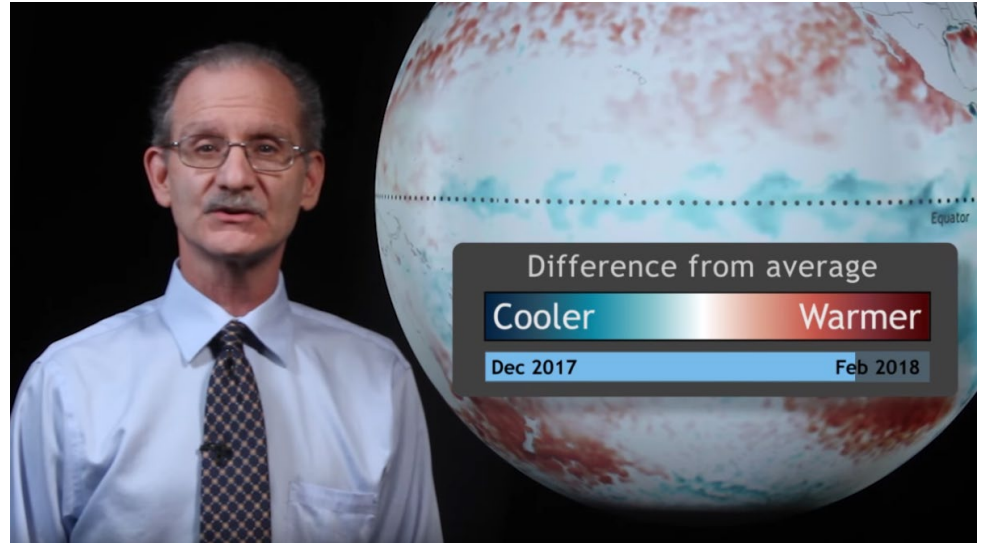


Successes

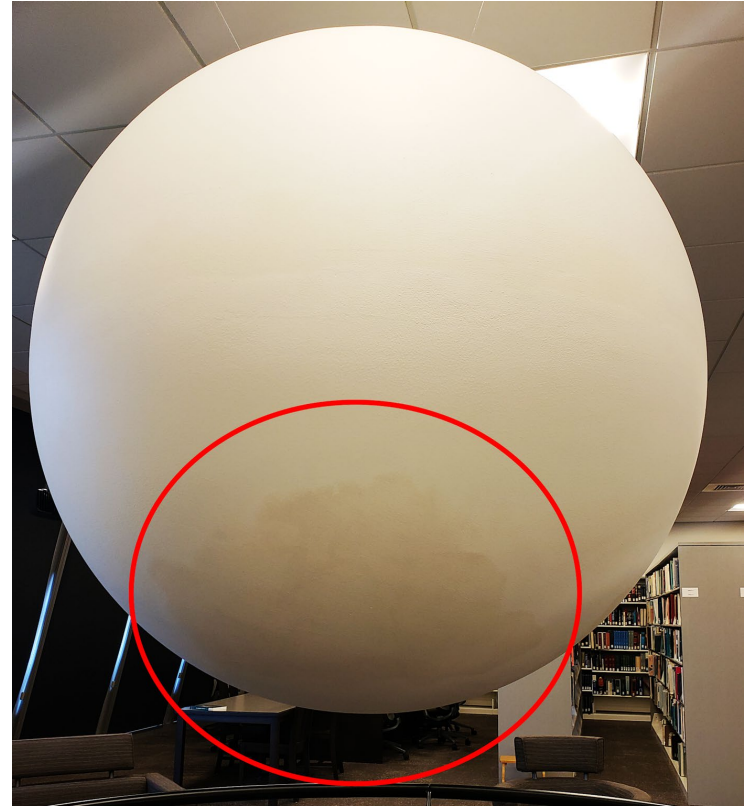
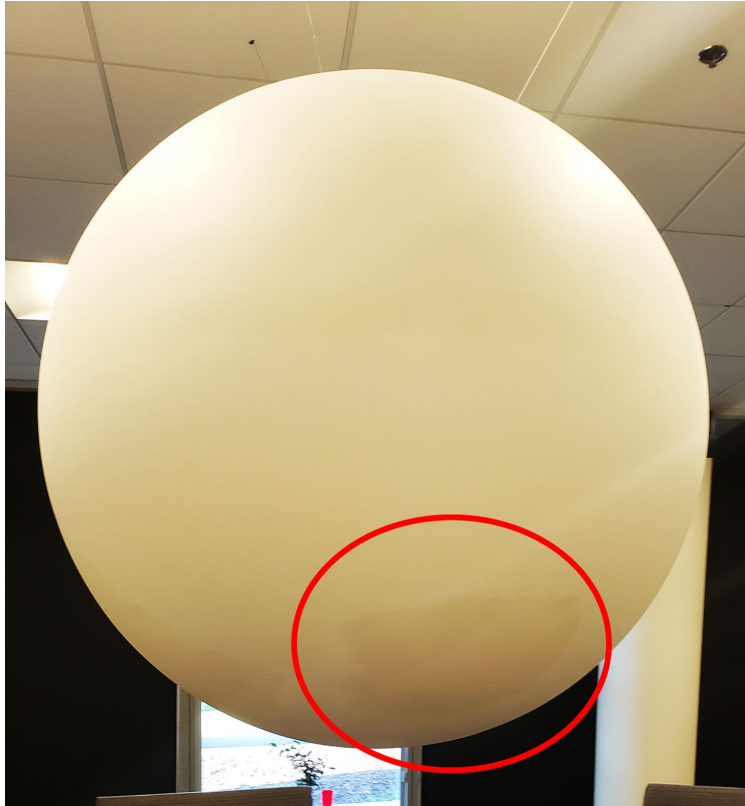
- Weather Prediction Center Daily Map Discussion
- Coral Bleaching Report (with custom data sets) from NESDIS STAR
- GOES-16 Lightning/Space Station VR of Hurricane Harvey from NESDIS STAR

Successes

- Climate.gov Climate Outlook [forecast video](#)
- Student Intern project presentations
- NCWCP Open House



Challenges



Challenges

- Security Perimeter
- Content Creation
- Community Buy-in
- Programming

Questions?

Ari Myers

arialmis.myers@noaa.gov

Jan Thomas

jan.thomas@noaa.gov