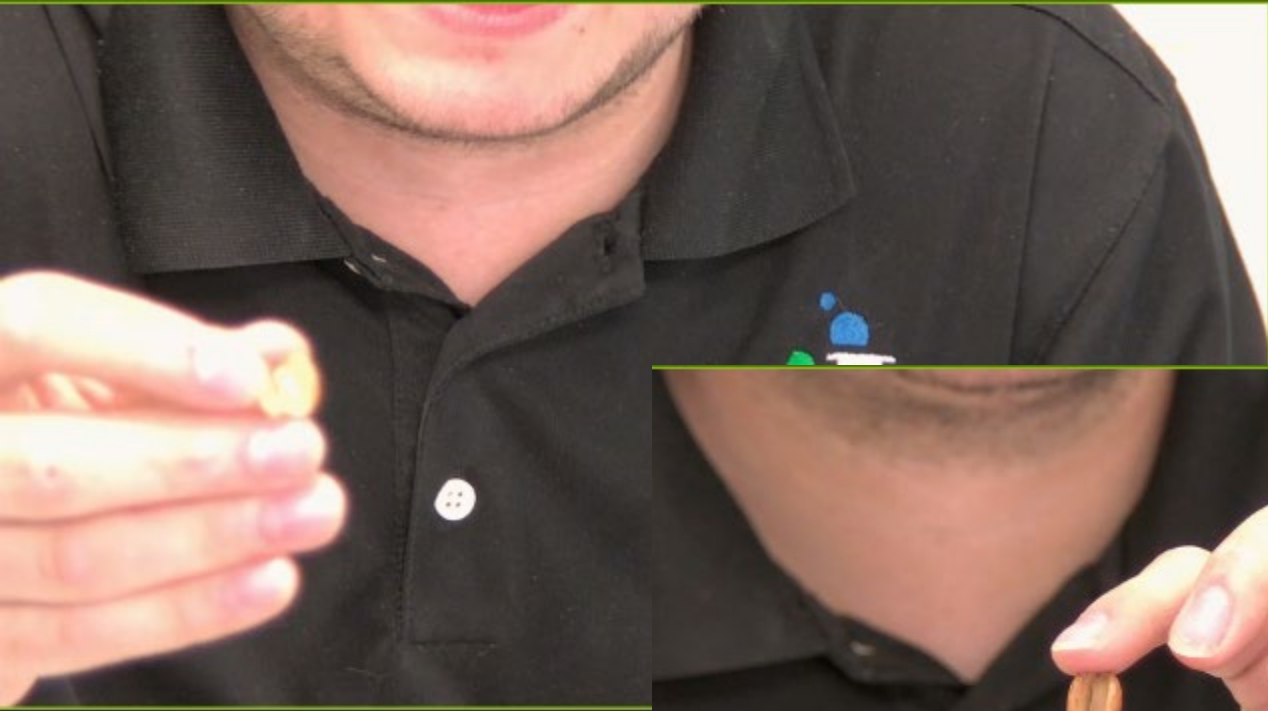


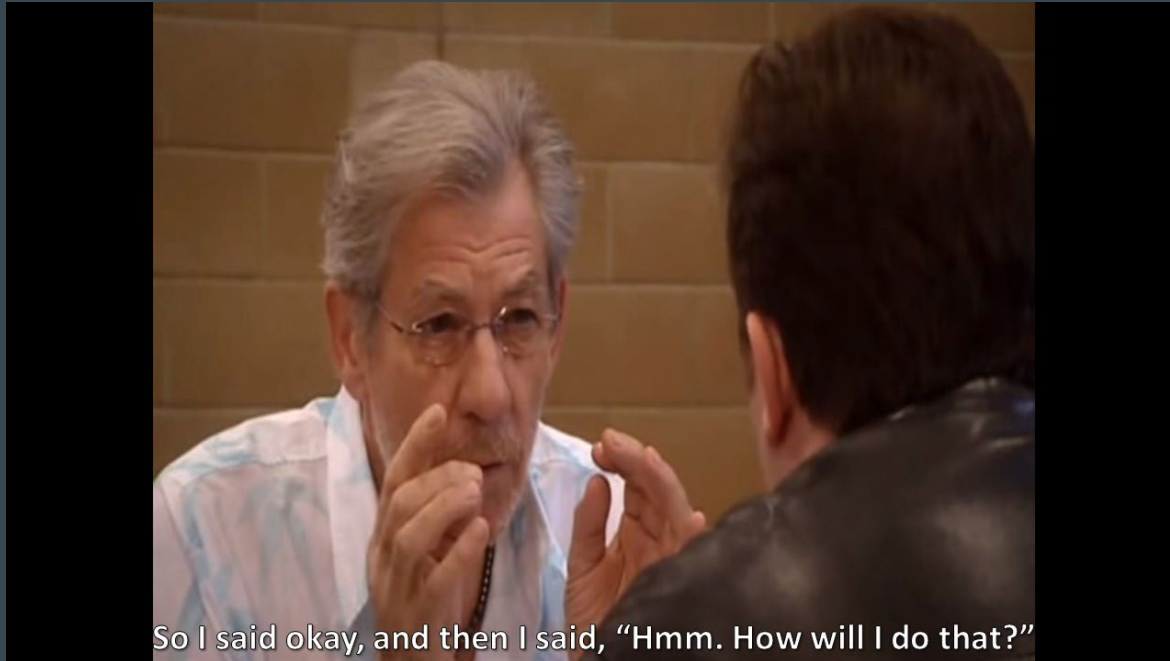
Plants to Planets: Using SOS as a Teaching Tool

- Two basic audiences
 - In-House
 - Special programs
 - Media
 - Adult Events
 - Special Abilities
 - Public programs
 - School programs
 - Virtual
 - Education programs
 - Professional development programs
 - Pre-service educator workshops
 - Science enrichment programs



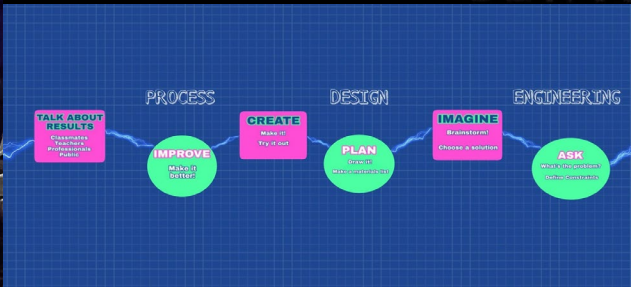


A Better Way









Exoplanets Developed In-House

ENG 中文

What is SOS?

Getting SOS

Education

SOS Explorer

Datasets

Support

Science On a Sphere®
National Oceanic and Atmospheric Administration



Search datasets

Submit

Categories

Live Programs

Search Results

Datasets found for "TRAPPIST": 7



Exoplanet: TRAPPIST - 1b Mar. 14, 2017

Keywords: Exoplanet, Astronomy, Spitzer Space Telescope

Dataset Developer: NASA JPL/Caltech

Visualization Developer: Justin McAfee, Science Central

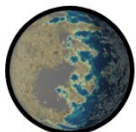


Exoplanet: TRAPPIST - 1c Mar. 14, 2017

Keywords: Spitzer Space Telescope, Exoplanet, Astronomy

Dataset Developer: NASA JPL/Caltech

Visualization Developer: Justin McAfee, Science Central



Exoplanet: TRAPPIST - 1d Mar. 14, 2017

Keywords: Astronomy, Spitzer Space Telescope, Exoplanet

Dataset Developer: NASA JPL/Caltech

Visualization Developer: Justin McAfee, Science Central





Bringing the
Universe to Our
Community

Coding Club (Ages 10-18)

- Gimp
- Scratch
- Photoshop
- SOS Suite

Cast a Wider Net

Making your Science On a Sphere a resource for your entire community





Name _____

SEE IT ON THE SP

Design an Exoplanet you want to see pr
Science on a Sphere

Large dashed box for drawing the exoplanet.

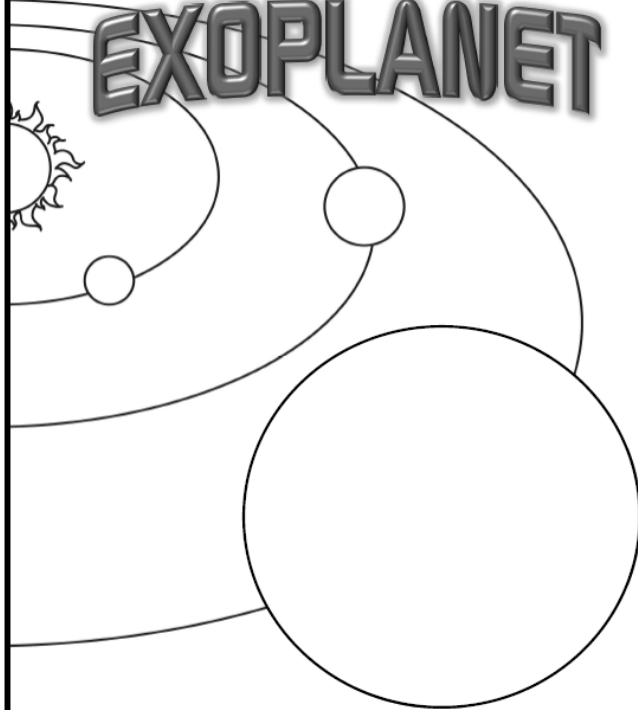
Remember: Fill the entire box and try to stay in



Name _____

Design your own

EXOPLANET

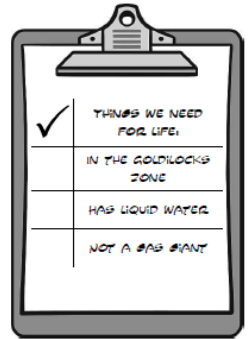


Name of your planet _____

Name _____

ALIVE?

What life might look
on an Exoplanet

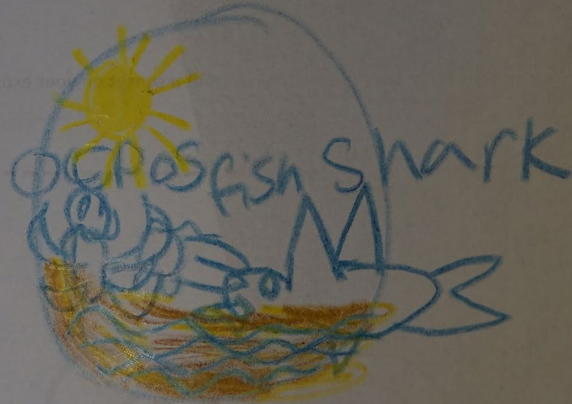


<input checked="" type="checkbox"/>	THINGS WE NEED FOR LIFE:
<input type="checkbox"/>	IN THE GOLDILOCKS ZONE
<input type="checkbox"/>	HAS LIQUID WATER
<input type="checkbox"/>	NOT A GAS GIANT

Overcoming Initial Hurdles

Draw a model of your exoplanet below!

Remember: *Your exoplanet must fill the entire blue box. Your planet must not go outside of the blue box.*



Draw a model of your exoplanet below!

Remember: *Your exoplanet must fill the entire blue box. Your planet must not go outside of the blue box.*



